



March 12, 2011 - March 31, 2012

Great East Japan Earthquake Disaster Relief Activities Report



Japan Baptist Convention

Great East Japan Earthquake Disaster Relief Committee

(May 16, 2012)

*We wish to express our sincere gratitude to all of our friends
who have supported the people and communities hurt by
the 3.11 Great East Japan Earthquake.*

Japan Baptist Convention

1-2-4 MINAMI URAWA MINAMI-KU SAITAMA-SHI,
SAITAMA, 336-0017 JAPAN

TEL 81-048-883-1091

FAX 81-048-883-1092

E-MAIL jbcrelief-overseas@bapren.jp

URL <http://www.bapren.jp/>

<http://baptist2.exblog.jp/>



Japan Baptist Convention

Great East Japan Earthquake

Disaster Relief Activities Basic Outline



●Sendai-Taitomi baptist church's Sunday worship on March 13.

◆ Activity principles

- "Working toward reconciliation." Reconciliation between God and humankind, among human-kind, and between humankind and creation. Working toward creation of new relationships based on the gospel.
- Keeping our eyes focused on the Christ of the cross, who is working in the midst of the pain, sadness, and suffering of the stricken areas. Approaching the people in stricken areas with respect, valuing those relationships of mutual learning, sharing the life and hope of the resurrection.

◆ Activity objectives

● **Solidarity with churches in stricken areas**

- 1) Sharing the pain, joy and toil of the churches in stricken areas. Praying with and supporting one another.
- 2) Assisting those churches so that they will be able to work enthusiastically for missions.
- 3) Studying together the issues raised by the disasters.

● **Supporting communities through the churches in stricken areas**

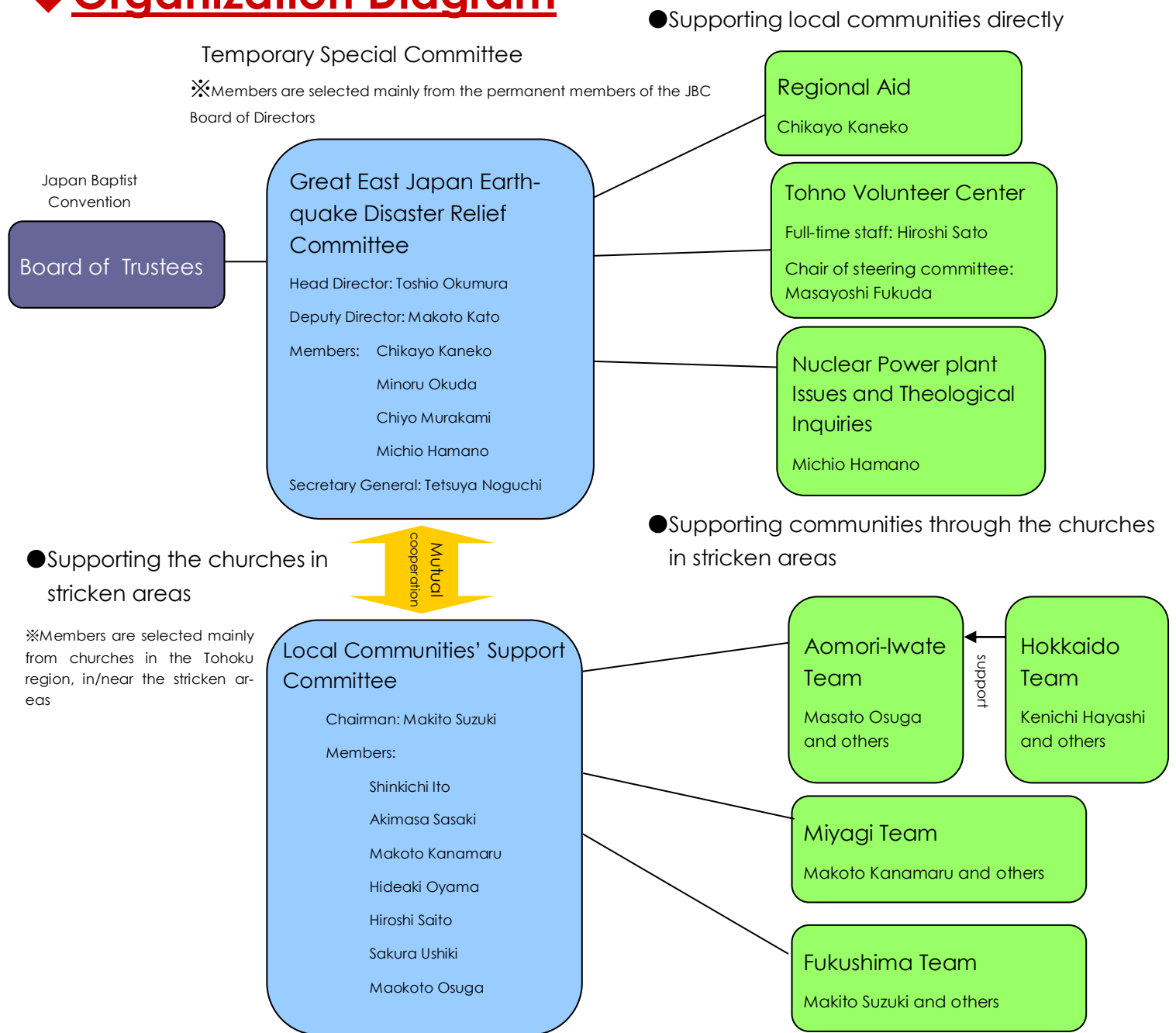
Supporting the work of reconciliation that those churches are carrying out in their communities (sharing the pain of the disasters, standing close by them and building new relationships).

● **Supporting areas directly**

- 1) Supporting the Sanriku coastal area, which the JBC has not been able to establish contact with in the past. Paying close attention to building relationships with the residents there and providing the support that we are able to as Christians.
- 2) Solidarity with those who are walking with the unseen burdens of the nuclear disaster, with special attention to supporting the lives of children.
- 3) Recognizing our prophetic mission to speak up to the government, local authorities and to the world.



◆ Organization Diagram



●April 2011 First meeting between JBC Tohoku Association and Disaster Relief Head-quarter members



●Meeting at Tohno Volunteer Center



●Meeting between the Aomori and Iwate teams

◆ Activities Report—looking back on the past year

3. 11, 2011



●An unprecedented M 9.0 earthquake hits East Japan, bringing 3 disasters to the region all at once: the earthquake, the tsunami and the nuclear power-plant accident. The damages were immense.



Many prayers, support and volunteers reached the stricken areas.

Great East Japan Earthquake Disaster Relief Headquarters (currently named Great East Japan Earthquake Disaster Relief Committee) was established on March 12th. Local teams (Aomori-Iwate, Miyagi and Fukushima teams) were launched and began relief activities. Emergency prayer meetings were held at the JBC office, and volunteer teams were deployed to the stricken areas.



●A wide range of relief supplies arrived at the JBC office, sent from churches and mission points from all over Japan.



●Debris removal and cleaning activity by volunteers

●Countless numbers of meetings were held to formulate action plans. A council held at Sendai

Summer in the stricken areas



●Tohno Volunteer Center was founded (Tohno City, Iwate Prefecture)



●Shaved ice was served to residents of temporary housing under the hot summer sun.



●Roasted fish was handed out at Oshika Peninsula (Miyagi Prefecture)



●Game corners were set up for children at a temporary housing site with "yo-yo fishing," ring tossing, etc..



●Many youth volunteers from Seinan Gakuin University and churches all around the country were involved in the relief efforts.

We may be of very limited power, but we are not powerless.

6 months on from the great earthquake, still not knowing to what future we were heading and with tons of issues yet to be resolved, we held hands and kept on going. Our Local Communities' Support Committee implemented various support activities and programs at temporary housing communities. Disaster Relief Headquarters kicked off the Tohno Volunteer Center, and the "Nagomi Café" started its operation. Each project was implemented under our 3 activity objectives: 1. solidarity with churches in stricken areas, 2. supporting communities through the churches in stricken areas, and 3. Supporting those areas directly.

The cold winter season

Love has no borders !!

We have been receiving endless support from our overseas friends, starting form immediately after the earthquake. In September, the Baptist Roundtable Summit on Recovery Efforts was held at the JBC office, and Baptist groups gathered from around the world. Even now, our Baptist brothers and sisters are praying for Japan and sending their support.



●A support team from overseas visits temporary housing community (Ando, Iwate Prefecture)



●Teams from Hawaii and Bangkok held a support program at Oshika Community Center (Miyagi Prefecture)



●Presents handed out at the Midorigaoka temporary housing complex (Fukushima prefecture)



●Christmas Party at the Otsuchi temporary housing complex (Iwate prefecture)



●Handing out presents at the Nodamura temporary housing complex (Iwate prefecture)

Delivering the hope that is brought to us through Christ's birth...

Fun programs were held at Christmas for residents of temporary housing and presents were handed out. Cooperation from various people and groups, as well as donations sent from churches throughout Japan made it possible for us to prepare presents such as Christmas stockings stuffed with snacks and candies.

Marking the 1st anniversary of the Great Earthquake

●Memorial Service held at Koriyama Cosmos-dori Church



3.11, 2012



We also rejoice in our sufferings, because we know that suffering produces perseverance; perseverance, character; and character, hope (Romans 5 : 3~4)

On Sunday, March 11th, 2012, various services and prayer meetings were held in the afflicted areas in remembrance of the disaster. The issues that we face are grave, however, we are going forward one step at a time. The churches in these areas continue their activities, putting their faith in the Lord Jesus who walks before us.



●Service at Taitomi Church



●3.11 assembly at Nankodai Church



●Service held at Yoshioka Mission Point

◆ Future Activity Plans

Aid to temporary housings

Delivering not only supplies but also "kizuna" (bonds of friendship)



We will continue to deliver careful support catered to temporary housing through the churches in the afflicted areas. Visiting the housing communities with loads of vegetables in our cars, opening temporary cafes (tea times), sing-along coffee times, etc.. We will continue activities aimed at putting smiles on the faces of the people who gather in the assembly halls of the housing complexes and helping them find hope. The numbers of suicides and solitary deaths are increasing in these communities. Various types of mental health care are becoming more and more vital. Please remember this in your prayers. We appreciate your continued support.

Volunteers Recruitment

Please utilize the Tohno Volunteer Center!



Starting this June, the Tohno Volunteer Center will be recruiting volunteers throughout the country twice a month, aiming to bring more detailed assistance to the people of the afflicted areas and to expand the volunteer base's activities. We plan to continue our involvement in NPO Magokoro-net's activities, and at the same time cater to the various needs of temporary housing residents. During the summer vacation season, we are planning to implement study-support programs. For information on schedules and volunteer activity details, please contact Chikayo Kaneko (Regional Aid), or Hiroshi Sato (full-time staff stationed in Tohno Volunteer Center.)

Care programs for children

We aim to protect the lives and futures of the children of Fukushima!



It has been medically proven that when removed from Fukushima for 2 weeks, we can see decrease in the radiation levels in children's bodies. (Above, the Okinawa Confederation invited children from Fukushima.) We are planning 2 week programs during the summer vacation season aimed at lowering the radiation accumulated in children's bodies as much as possible. Considering the psychological stress that children may feel being separated from their parents for 2 weeks, we intend to plan the project so that the children can spend some time outside Fukushima along with their parents or a fellow church member. For more details, please contact Chikayo Kaneko.

The JBC's relief programs are supported entirely by your warm contributions. We greatly appreciate your continued support.

●Itemized list of relief work activity related expenditures for 2011 (FY2012 balance sheet) ●

- | | |
|--|-------------|
| 1. Supporting churches (building repair, condolence money, etc.) | ¥15,841,582 |
| 2. Supporting the work of churches (supporting activities, purchasing vehicle for relief work, etc.) | ¥24,502,635 |
| 3. Support to local communities (JBC direct relief work, Tohno Volunteer Center, etc.) | ¥32,090,958 |
| 4. HQ operational fees (personnel fees, administrative fees, meeting costs, etc.) | ¥15,028,675 |
| 5. Cooperation with overseas/other groups (e.g. other Baptist groups) | ¥4,097,074 |
| 6. Other costs (remittance charges etc.) | ¥185,759 |

Total : ¥91,746,683



●Volunteers talking to temporary housing residents

Issues surrounding the nuclear power plant accident

One of the gravest issues stemming from the Tokyo Electric Power Company's Fukushima Daiichi nuclear power plant accident is the fact that the damage it caused is preventing communities from starting the recovery process. The radiation contamination is creating division and barriers among the people, and this is becoming an emotional burden for them. Recognizing these as our own problems, we plan to keep tackling the issues surrounding the nuclear power plant accident henceforth. We will further pursue our efforts to purchase Geiger counters and set them up where they are needed.



●Lecture held to discuss the nuclear power plant accident (May 11, 2011, Fukushima)



●Scaffolding set up to repair roof tiles at Koriyama Cosmos-dori Church

◆Messages from Local Staff



Seeing the Cherry Trees in Bloom

Chikayo Kaneko

Regional Aid

Japan Baptist Convention Vice President
Pastor, Miyazaki Maruyama-cho Church



1 year has past since the Great East Japan Earthquake, but I cannot forget that day. At the same time, I cannot remember the cherry blossoms that must have been in bloom at that time of the year. So when I saw the cherry blossoms on a tree in the park in front of Koriyama Cosmos-dori Church this year, memories of all the days that we have lead this past year came flooding back to me, and I was struck again of the abundance of the Lord's protection and His support that is beyond words, and the abundance of the prayers and gifts that were sent from our friends all around.

Areas hit by the Tsunami. Areas suffering from the nuclear power-plant accident. Damages in these areas are beyond our powers. Rubble and ruins spread out in front of us. We cannot see radiation. The tears of the people. "Lord, why is it?" I cannot stop asking. However, I come across the Lord's presence in the midst of the suffering, he is with me. My fellow workers also are with me, and we share in our toils. They have brought me such comfort and support. An year has passed since the earthquake, and serious issues are rising: the increasing solitary deaths and suicides in temporary housings. In Fukushima, there are areas where reconstruction will take at least 5 more years; there, people cannot see the future. And this is why it is necessary for us to take a long-term approach. We wish to walk forward carrying the Lord's love, and to walk side by side with the people in the afflicted areas. I go out to the temporary housings yet again today, with these thoughts in my heart.

Please remember the missions of the churches in the afflicted areas in your prayers. We greatly appreciate your continuous donations.

May 2012

Sending Prayers

Hiroshi Sato



Tohno Volunteer Center Full-time staff



1 year has past since the earthquake. Many of those who were afflicted by the earthquake say they were completely lost in the first few months after the disaster. Many have no memory of those early days. When I invite them to write haiku or senryu with me (short poems), some saying that they cannot, because they have forgotten too many words. I invite them to do origami with me, and people who were perfectly capable of making paper cranes an year ago, cannot do so any longer. Going through strenuous days for such a long period of time, their hearts and minds have stiffened. We work with these people, helping them to weave their words into poems little by little, move their bodies little by little, and here, the support sent from the churches of JBC is hugely appreciated. "Why do you do so much for us?" I am asked. And I answer, "my friends from all over Japan are praying for you and sending their support." Many of the people here give thanks to my response.

But please do not forget. They are still living in temporary housings, and temporary housings are only temporary. They are not real homes. Please pray for the people here: for the holes in their hearts left by lost families and friends that cannot be filled, that their lives will become normal once again, as close as possible to what they used to be in the past.

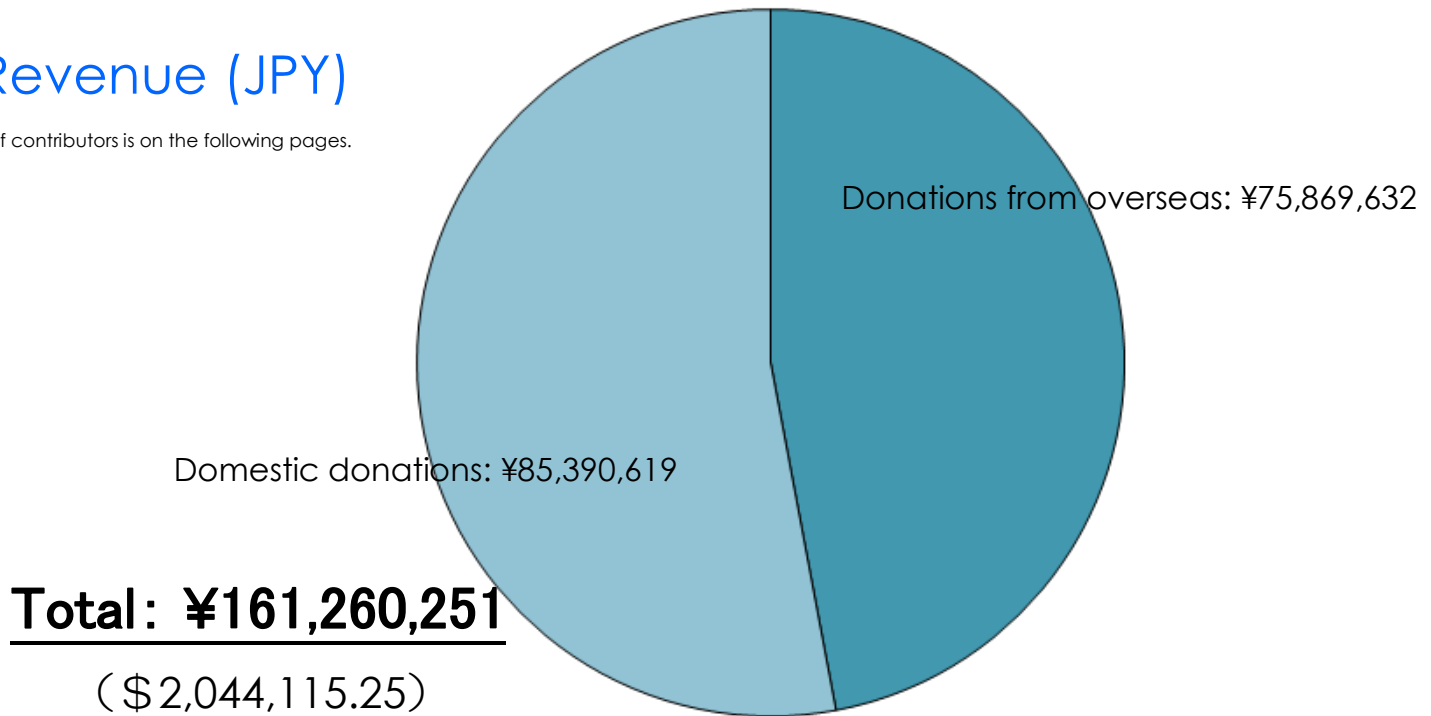
May 2012

◆ Financial report

The official financial report will appear in the 58th JBC Annual Assembly Report after being audited by JBC's internal auditors in May 2012.

● Revenue (JPY)

※A list of contributors is on the following pages.



● Expenditure (JPY)

HQ administration and local staff personnel costs, administrative and operational expenses (e.g. meeting expenses), expenses in theological inquiry areas / staff training, reserve funds etc.

Relief/support supplies, cleaning/repair work support, shipping costs, Tohno Center operation fees (e.g. rent, initial start-up costs, equipment, activity fees, etc.)

Cooperation with overseas and other groups ¥4,092,129

other expenses ¥189,423

Building repair work, support for dealing with nuclear power-plant accident contamination, support towards children affected by the nuclear power-plant accident, condolence visitations to afflicted residents, special support for pastors in the afflicted areas, etc.

Support to local churches ¥16,515,422

Support to activities run by local churches ¥17,934,436

Automobile purchase for support activities, Local Communities' Support Committee operation fees, local churches activities support, etc.

Support to local communities ¥38,707,596

HQ operation ¥14,307,677

Total: ¥91,746,683
(\$1,162,969.75)

Balance : ¥69,513,568

We appreciate your kind support to our Great East Japan Earthquake Disaster Relief Donation (fund)

Funds can be sent directly to the Japan Baptist Convention account via wire transfer.

Account information:

- **PAYING BANK:** MIZUHO BANK, LTD.
- **A/C WITH BRANCH:** URAWA BRANCH
- **ADDR:** 1-4-9 Nakamachi Urawa-ku. Saitama City, 336-0062 JAPAN
- **SWIFT CODE:** MHBKJPJT • **A/C NUMBER:** 541-1243429
- **PAYEE NAME:** JAPAN BAPTIST CONVENTION
- **ADDR:** 1-2-4 Minami Urawa. Minami-ku. Saitama City, 336-0017 JAPAN

When completing the bank remittance form at the bank counter, please clearly note "Donation for Disaster Relief" in the DETAIL OF REMITTANCE column.

We would very much appreciate funds being sent collectively from churches. Please note that there is an additional bank account set up for overseas donations.



◆ “Great East Japan Earthquake Disaster Emergency Relief Fund” Contributors



*Fund name has been changed to “Disaster-affected Areas’ Support Fund” as of April 2012

March 12, 2011—March 31, 2012 (fiscal 2011) Titles/ church names have been abbreviated due to limitations of space.

<March 2011>

Soichiro Yamaguchi, Hiratsuka Church, Keiichiro Fujino, Ureshino Church, Hitoyoshi Church, Kaoru Hayashi, Mitaka Church, Arata Furukawa, Kobe Shinsei Church, Nakano Church, Yutaka and Sanae Ogami, Ryuichi Hirai, 宋 炯穆, Tarami Church, Kansai Association, Okinawa Union, Makurazaki Mission Station, Fujimi Church, Goro and Ayako Amano, Yu and Nobue Amano, Satoko Kumakura, Otaru Church, Tsuguhiro Touma, Shinsaku Taniyama, Terumi Miura, Pastors of the West-Kyushu Association, Chinatsu Ide, Kazuhiko Nakagawa, Hiroko Matsui, Misawa Church, Hironobu Yamauchi, Chikako Yamaguchi, Yukie Ecchuya Yukie, Fumiko Yamamoto, Kinmei Printing Co., Ltd., Hanakoganei Church, Yokohama New Life Church, Maebashi Church, Hananoi Church, Hasune Church, Tokorozawa Church, Nishi-Kyushu Association Women's Section, Hachioji Mejirodai Church, Houfu Church, Hirano Church, Toyonaka Church, Toyohashi Church, Hiroshima Church, Okayama Church, Keiyaku Senkyo Church, Osamu Matsukura, Mediscal Foundation, Zushi Daiichi Church, Chubu Association, Tamagawa Church, Shuri Church, Tokyo Daiichi Church, Higashi Fukuoka Church women's group, Hirokuni Furuno, Kita Shirakawa Church, Urawa Church, Kobe Church (Hikarino-oka Kindergarten, Himawari group, and staff), Kayoko Tatemoto, Yokohama-Totsuka Church, Dogo Church, Omurakogashima Church, Kaku Nobue Heaven's Garden, Norcross First Baptist Church, Indonesia Baptist Union, COOPERATIVE BAPTIST FELLOWSHIP, BAPTIST GENERAL CONVENTION, COMUNIDAD CRISTIANA EBEN EZER, BAPTIST STATE CONVENTION OF NC, CHINESE BAPTIST CONVENTION, Utsunomiya Church, Yokohama-Yamate Church, Fujimi Church, Shonandai Church, Thailand Baptist Theological Seminary, Kita-Kyushu Association Music Committee, Kiyoko Kamiya, Kazuo Nishiyama, Yasuaki Negishi, Ainoura Church, Mikiko Kikukwa, Texas Baptist Man, SICAP Ministry, Dr. Daniel W O'reagan, Takasu Church, Aubrey L Williams, Jiyugaoka Mission Station, Kurume Church, Maebashi Church, Ichikawayawata Church, Kurigasawa Church, Shinozaki Church, Ohatano Church and Kindergarten, Aoba Church, Mishima Church, Minami Nagoya Church, Mizuho Church, Shion-no-Oka Church, Higashi-Toyonaka Church, Akashi Church, Imabaru Church, Matsuyama Church, Fukuoka-Minami Mission Station, Isehaya Church, Higashi-Kumamoto Church, TAEJONG KIM, THAILAND BAPTIST CONVENTION, Norcross First Baptist Church, Kawasaki Church, Fujiyoshida Church, Gisuke Nakajo, Hirao Church, Masatomo Watanabe, Aiko Usui, Amagi Assembly, Myanmar Women's Union, HERB FISHER, LO&PE365, Shibuya Church, Hiragishi Church, Omiya Church, Akatsuka Church, Oizumi Church, Tamagawa Church, Sagami-Chuo Church, Toyohashi Church, Kanazawa Church, Aichi Shinsei Church, Otsu Church, Tanabe Church, Kobe Ikawa Church, Akira Momoyama, Takamatsu Ota Church, Tokuyama Church, Nishi-Fukuoka Nozomi Mission Station, Kokubu Church, Minami-Kyushu Convention, Sachi Katayama, Etsuko Haraguchi, Ariake Church, Open Door Chapel, Shimura Church, Hanakoganei Church, Tachikawa Church, Hamamatsu Church, Yokkaichi Church, Sakai Church, Kansai Reimei Church, Amagasaki Church, Megumi Church, Wakamatsu Church, Meihama Church, Fukuoka Shinsei Church (Chintao Korean Church), Fukuoka Seibu Church, Nagasaki Church, Ijuin Church, Nishi-Kanto Association, Kobe International Church, Kazuo Takano, Shimizu Eiko Church, Takarazuka Church, Usuki Church, Marugame Joto Church, Fukuoka Church, Kasugahara Church, Kanagawa Association Mustard Seed Group, Koji Nakamura, Ayana Yoshid, Yutaka Taniuchi, Tarami Church, Nishi-Kyushu Association Boys and Girls' Group

<April>

Mr.Eugene J. Sues, Kushiro Church, Keiyaku Senkyo Mission Station, Yokodai Church, Osaka Akebono Mission Station, Matsuyama-Nishi Church, Fukuoka International Church, Takuma Church, Reisui Church, Kenro Mita, Takanobu Yamanaka, Makoto Kamimura, Hideyuki Inoue, Nami Sakaguchi, Kyushu Seminary, Ota Church, Ichikawa Ono Church, Tokyo Korean Church, Yokohama JOY Church, Osaka Church, Iizuka Shion Church, Koga Church, Kasuya Church, Ito Church, Naha Shintoshin Church, Kagoshima Mission Station, Tanegashima Mission Station, Yoshihiro Abe, Thelma Moorhead, Robert L Lamb, Saga Church, Kikuchi Shion Church, Nishi-Kawaguchi Church, Chiba Church, Matsumoto Fukuinmura Church, Hirano Church, Beppu International Church, Tarami Church, Hidekazu Fujii, Hamakoshien Church, Tuskushino-Futsukaichi Church, Kumamoto Aiizumi Church, Chofu-Minami Church, Miyako Saito, Jobandai Church, Myogadani Church, Shizuoka Church, Shimonoseki Church, Hitoyoshi Church, NORSKE BAPTIST, BWA, Tamagawa Church, Higashi-Fukuoka Church, Hiraoka Joyful Chapel, Otomi Church, Tokorozawa Church, Kurigasawa Church, Nakano Church, Keiyaku Senkyo Mission Station, Aoba Church, Hirabari Church, Kobe-Nishi Church, Kiku Church, Oita Church, Wairo Church, Nagazumi Church, Isehaya Church, Miyazaki Church, Mari Kawano, VIRGINIA BAPTIST, CHINESE BAPTIST (Taiwan), Hinoshinmei Mission Station, Fukuoka Bethania-mura Church, Yokohama-Totsuka Church, Otsu Church, Tokyo-Nishi Church, Tsukuba Church, Herb Fisher, Aomori Church, Misawa Church, Akita Church, Hajime Watanabe, Sumio Kaneko, Manami Togawa, THAILAND BAPTIST, Takasaki Church, Minami-Kokura Church, Noogata Church, IJCS, Yoshioka Hikari-no-en, Ageo Church, Higashi-Osaka Church, Kawachi Church, APBF, OKULAHOMA, Misawa Church, Machida Mission Station, Kawane Church, Matsuyama-Nishi Church, Moji Church, Fukuma Church, Oomura Kogashima Church, Michael C. Moorhead, Funabashi Church, Mishima Church, Wakayama Chuo Mission Station, Onoda Church, MYANMMAR BAPTIST, Kitakyushu Shinsei Mission Station, Kanetake Church, Kiyoko Shimada, Naoe Yokomizo, TAE JONG KIM, Oizumi Church women's group, Sasaguri Church, CHINESE BAPTIST (Taiwan), Tamagawa Church, Kanazawa Church, Nagoya Church, Toyama Koizumi Church, Minami-Senri Church, Osaka Chuo Church, Kochi Isezaki Church, Higasi-Yawata Church, Seinan Gakuin University School of Divinity, Nogata Church, Otaru Church, Ureshino Church, Maebashi Church, Koshigaya Mission Station, Izumi Church, Kobe-Nishi Church, Moji-ko Church, Kikuchi Shion Church, Kagoshima Church, Tanegashima Mission Station, Shion-no-oka Church, MASAYA KATOH, Urawa Church, Miyahara Church, Kokura Church, Houhu Church, Higashi-Kurume Church, Yasumune Kamiyoshi, Hakodate Mihara Church, Shimura Church, Kamakura-dai Mission Station, Kansai Reimei Church, Kyoto Rakusei Church, Eba Church, SLAVIC EVANGELICAL BAPTIST, Otake Church, Megumi Church, Tokushima Church, Takasu Church, Kokura Church, Koga Church, Okinawa Union, Eba Church, Akikawa Mission Station, Yokohama New Life Church, Tottori Church, Wakamatsu Church, Katae Church, Saga Shinsei Church, Fukue Mission Station, Kurume Araki Church, Fukuoka Association women's group, Oizumi Church, Dabie Weasef Senkawa Church, Asahikawa-Higashi Hikari Church, Mitaka Church, Konan Megumi Church, Mizuho Church, Takarazuka Church, Marugame Jotocho Church, Yawata Church, Ashiya Church, Nishi-Tozaki Church, Hakata Church, Seinan Gakuin, Meihama Church, Omuta Church, Shion-no-oka Ai-no-en Nursery School, CHINESE BAPTIST (Taiwan)

<May>

Yurigaoka Church, Hakodate Church, Hachinohe Church, Niigata Shunominato Church, Tokai Mission Station Migiwa Kindergarten, Hanno Church, Tsudanuma Church, Shinagawa Church, Yokohama-Totsuka Church, Mishima Church, Toyohashi Church, Hirano Church, Takamatsu-Ota Church, Kitakyushu Church, Tomino Church, Yokodai Church, Zushi Daiichi Church, Fujisawa Church, Komatsugaoka Mission Station, EV. KIRCHENGEM (NETHERLAND), Kyodo Church, Tokorozawa Church, Kawagoe Church, Tomisato Church, Kurigasawa Church, Nakano Church, Hachioji Mejirodai Church, Toyomae Mission Station, Fujimi Church, Akita Church, Tosu Church, Kawasaki Church, Fukuoka Church, BAPTIST CONVENTION OF HK, Nishi-Kawaguchi Church, Hiratsuka Church, Leroy & June Seat, Debbie Maze, Gardena-Torrance Southern Baptist Church, East-West Baptist Church, Gardena-Torrance Japanese Southern Baptist Church, Edamitsu Church, Ijuin Church, BAPTIST CONVENTION OF TEXAS, Mitsu Moriyasu, BAPTIST CONVENTION OF TEXAS, ASIA PACIFIC BAPTIST FEDERATION, Yokkaichi Church, Higashiyama Church, Keisen Church, Yamanashi Church, Amakusa Mission Church, Sendai Church, Kanto Plains Church, Kasugahara Keisei Kindergarten, Miyazaki Church, Takanabe Mission Station, Kumamoto Aisen Church, Niigata Shunominato Church, Jobandai Church, Fukuoka Betania-mura Church, Midori-no-makiba Church, Shibuya Church, Shion-san Church, Sapporo Church, Kawasaki Church, Fujiyoshida Church, Kyokuto Hosu (Korea, FEBC), Ichikawa-Yawata Church, Ojiya Fukuin Church, TOH S T/MA S S, Aoba Church, Otsu Church, Haru and Hidehiko Fujita, Goro and Ayako Amano, Kanagawa Association wome's group (bazaar), Gardena-Torrance Japanese Southern Baptist Church, SINGAPOLE BAPTIST CONVENTION, Hananoi Church, Shinozaki Church, Ainoura Hikari Church, First Baptist Church Of Norcross, 19th Street Japanese Church (Nobuo Kuriyama), Mejirogaoka Church, Amagasaki Church, Hiroshima Church, Hiraoka Joyful Chapel, Mito Church, Hamamatsu Church, Kansai Association women's group, Ureshino Church, Chiba Wakaba Church, 4 friends of Chofu-Minami Church, Ohatano Church, Ota Church, Koga Church, Ichikawa-Ono Church, Hatagaya Mission Station, Yokohama JOY Church, Shion-no-oka Church, Kobe-Nishi Church, Tsukushino-Minami Church, Kagoshima Church, Tanegashima Mission Station, Nishi-Kyushu Association men's women's and youth's groups, Urawa Church, Keisen Church, Takasu Church, Akatsuka Church, Shimura Church, Tokyo-Kita Church, Izumi Church, Aichi Shinsei Church, Mizuho Church, Gifu Church, Kansai Reimei Church, Kita-Kyushu boy's and girl's group, Anderson University

<June>

Takamatsu Tokiwa-cho Church, Tamagawa Church, Izumi Church, Minami-Kokura Church, Omura Kogashima Church, Okayama Church, VIRGINIA BAPTIST MISSION BOARD, Kanda Church, Koyu Church, Yokohama Totsuka Church, Yokodai Church, Fukuoka Seibu Church, Hanakoganei Church, Sakai Church, Nara Church, Hiroshima-Nishi Church, Kanda Church, Omuta Church, Harbor Trinity Baptist Church, Shinagawa Church, Sagami Chuo Church, Mishima Church, Meihama Church, Hirano Church, Chugoku-Shikoku Church Association, Wakamatsu Church, Naha Shintoshin Mission Station, Terumi Miura, Sendai-Kita Church, Hitachi Church, Tachikawa Church, Shimonoseki Church, Fukuoka Shinsei Church, Nogata Church, Sean Claire, Yoshiko Tamaki, Tokorozawa Church, Kita-Osaka Church, Toyomae Mission Station, Kiku Church, Oita Church, Fukuoka Arita Church, Ichikawa Yawata Church, Nakano Church, Sagami Chuo Church, Shonan Church, Sagami Chuo Church, Tachikawa Church, Seinan Gakuin, Nagaland Baptist Church Council, Singapole Baptist Convention, Takasu Church, Kasuya Church, Kanazawa Church, Itami Church, Kasumigaoka Church, Kurigasawa Church, Goro and Ayako Amano, Tsuzuki Church, Stadtmusik Eendingen, Saga Church, Fuchu Church, Cham Jo Eun Church youth group (Korea), Takahira Yamakawa, Fuchu Church, Orio Church, Yamagata Church, Kawasaki Church, Jiyugaoka Mission Station, Ureshino Church, Otomi Church, Chiba Church, Zama Church, Takasau Church, Koga Church, Nogata Church, Nobeoka Church, Kagoshima Church, Urawa Church, Ariake Church, Nishi-Kawaguchi Church, Otsu Church, Kobe-Nishi Church, Kansai Reimei Church, Kitakyushu Church, Tokyo Association Social Issues Committee, Seinaugakuin Church, Fukuoka Association Social Issues Committee, Kurume Araki Church, Shizuoka Church, Mizuho Church, Megumi Church

<July>

Meihama Church, Akita Church, Shion-no-oka Church, Kokura Harugaoka Church, Kokura Church, Tokyo Daiichi Church, Tomoko Nakajo, Houhu Church, Tarami Church, Kitakyushu Association youth's group, Wakamatsu Church, Tokyo Daiichi Church, Imabari Church, Hirao Church, Tsukuba Church, Nakano Church, Hachioji Mejirodai Church, Oimachi Church children's group, Isehaya Church, Kagoshima Church Sunday School, Nahashintoshin Church, Hananoi Church, Living Hope Church, Mejirogaoka Church children's group, Chinese Baptist Fellowship, USA/CA, Shade Crest Baptist Church, AL./USA, Asia Pacific Baptist Federation, McKinney Christian School, USA/TX, Hachioji Mejirodai Church, Tamagawa Church, Kyoto Church, Fukuoka Josai Church, Baptist General Convention of TEXAS, USA, Yokkaichi Church, Kawasaki Church, Higashi-Osaka Church, Marugame Jotocho Church, Kitakyushu Association Church Education Committee, Goro and Ayako Amano, Oizumi Church children's group, Shinozaki Church, Fujimino Church, Fukuyama Church, Ota Church, Takasaki Church, Tokorozawa Church, Akatsuka Church, The Korea Baptist Convention, First Baptist Church of Norcross, Oklahoma Japanese Tsunami Relief 24, Wakayama Church, Oimachi Church Church Music Relief Concert, Mizuho Church, Wakayama Hikari Kindergarten alumni, Katae Church, Kobe-Nishi Church

<August>

Kurume Araki Church, Koga Church, Kagoshima Church, Shonandai Church, Higashi-Kumamoto Church, Takasu Church, Omura Kogashima Church, Oizumia Church, Hirano Church, Sagami Chuo Church, Mejirogaoka Church, Otake Church, Iizuka Shion Church, Same Church, Meishima Church, Tsukushino-Minami Mission Station, Ijuin Church, Leroy & June Seat, Debbie Maze, Ichikawa Yawata Church, Nara Church, Kansai Reimei Church, Tsukushino Futsukaichi Church, 申晟秀(萬民祝福教会), Sagami Chuo Church, Seinaugakuin Church, Asahikawa Church, Fujisawa Church, Fukuoka Betania-mura Church, Kasugahara Church, Kansai Association Pastors' group, Yokosuka Nagasawa Church, Ariake Church, Nakano Church, Izumi Church, Funabashi Church, Miyako Saito, Kim Sung Chul, Fukuoka Church, Logos Ventriloquy Study Group, Mebashi Church, Tokorozawa Church, Kochi Isesaki Church, Shinagawa Church, Wakamatsu Church, Goro and Ayako Amano, Higashi-Yawata Church, Morioka Church, Kobe-Nishi Church, Toyohashi Church, Jiyugaoka Mission Station, Mizuho Church, Shion-no-oka Church, Takasu Church, Kagoshima Church, Urawa Church, Kurume Araki Church, Mitaka Church childrens' group, Koga Church, Isehaya Church, Hanno Church, Otsu Church, Robert L. Lamb, Sheila Enelow, Thelma Moorhead, Eugene J. Sues, Anderson University, Michael C. Moorhead, First Baptist Church of Norcross, Dr. Daniel W. O'Reagan, Beverly A. O'Reagan, Margery Schwartz, Arthur Schwartz, Tsuneo and Tamiko Hirabayashi

<September>

Okayama Church, Yawata Church womens' group, Ijuin Church, Sasaguri Church, Kansai Reimei Church, Minami-Kokura Church, Yodobashi Agape CGN, Mens' Union (annual convention), Hamamatsu Church, ASIA PACIFIC BAPTIST FEDERATION, Higashi-Fukuoka Church, Youth Annual Convention, Nakano Church, CHINESE BAPTIST FELLOWSHIP, So Suzuki, Tamagawa Church, Aianoura Church, Komatsugaoka Mission Station, Yurigaoka Church, Kasumigaoka Church, Goro and Ayako Amano, BAPTIST STATE CONVENTION OF NC, Kyoto Rakusei Church, Tokorozawa Church, Shinozaki Church, Moji-ko Church, Amakusa Mission Church, Kasugahara Keisei Kindergarten parents' group, Keisen Church, Hasune Church, Singapore International Japanese Church, Toyomae Mission Station, Kita-Kanto boys and girls 1 day retreat, ATLANTA, Kyushu Mission Forum, Mizuho Church, Koga Church, Tsukushino-Minamia Mission Station, Kagoshima Church, Urawa Church, Kurume Araki Church, Takamatsu Tokiwa-cho Church, Tanabe Church, Keiko Sakihama, Jiyugaoka Mission Station, Nishi-Kanto Association womens' 1 day retreat mini bazaar, Omura Kogashima Church, Asahikawa-Higashi Hikari Church, Takasu Church, Omura Kogashima Church, Yokkaichi Church, Orio Church

<October>

Higashi-Yawata Church, Nara Church, Hanakoganei Church, Patchwork Class Calico, Marugame Jotocho Church, Kansai Association Music Committee, , TEXAS BAPTIST CONVENTION, Yashiro, Kitakyushu Association Yasukuni Committee, Chubu Association youth group, Nakano Church, Hiroshi Sakata, Sachiko Kariyama internet donation, Tokiwadai Church, Oita Church, Kansai Reimei Church, Miyako Saito, Hachioji Mejirodai Church, Kobe Shinsei Church, Ito Church, Prakanong Baptist Church, Jiyugaoka Mission Station, Takarazuka Church, Senkawa Church, Fukuoka Betania-mura Church, Hitachi Church, Takasu Church, Toshiaki Numata, Goro and Ayako Amano, Reisui Church, Shion-no-oka Church, Ainoen Nursery School, Wakamatsu Church, Talladega First Baptist Church volunteers (via Omura Kogashima), Meihama Church, Kobe-Nishi Church, Miyahara Church, Urawa Church, Hiroshima-Nishi Church, Takasu Church, Kagoshima Church

<November>

Nishihara Shinsei Church, Otsu Church, Mizuho Church, Tomisato Church, Houhu Church, Nagyoga Church, Mejirogaoka Church, Shinagawa Church, Fukuoka Church, Omura Kogashima Church, Koga Church, Niigata Shunomura Church, Nishiki Koga, Otomi Church, Kansai Reimei Church, Sachiko Kariyama (internet donation), Kochi Isezaki Church, Nakano Church, Yurigaoka Church, Oi Church, Kawasaki Church, Mejirogaoka Church, Ayumi-no-ie Church, JBC Annual General Assembly closing service, Tokyo-Kita Church, Kobe Church, Utane String Quartet, Kikuchi Shion Church, Nishi-Kyushu Church, Hiroshima Church, Miyako Saito, Okinawa Convention, Miyazaki Church, Kagoshima Church, Megumi Church, Mizuho Church, Sendai Church, Goro and Ayako Amano, Koga Church, Nishi-Kawaguchi Church, Oi Church, Takasu Church, Maebashi Church, Tsukushino-Minami Mission Station, Kurume Araki Church, Seinan-jogakuin Alumni Kansai division, Hanno Church, Jiyugaoka Church, Toyohashi Church, Keisen Church

<Desember>

Takasu Church, Hachioji Mejirodai Church, BAPTIST STATE CONVENTION OF NC INC, Kansai Reimei Church, Akatsuka Church, Ichikawa Yawata Church, Fuchu Church, Shion-no-oka Church, Iki Church, Omuta Church, GGBI, Gardena Torrance Church Japanese division, Norcross First Baptist Church, Nagaland Baptist Church Council, Gardena Torrance Church Chinese division, Gardena Torrance English division, NEBRASKA, Texas Baptist Man, GGBI, Norcross Japanese Church, Iizuka Shion Church, Philippines SICAP Seminary, Kobe-Nishi womens' group, Kawasaki Church, Shion-san Church, Michiko Saruwatari, Nakano Church, Mejirogaoka Church, Kobe Hikarino-oka Kindergarten, Hiratsuka Church, Tokorozawa Church, Yokkaichi Church, Kurume Church, Tokyo Daiichi Kohitsuji Kindergarten, Kyoto Church, Aoshima Mission Station, Goro and Ayako Amano, Tokyo-Kita Union, Ainoura Church, Higashi-Fukuoka Kindergarten, Saga Church, Midori-no-makiba Church, Sasebo Church, Shinozaki Church, JBM-USA CHARLES A.RAY, Boulevard Baptist Church Anderson, South Carolina, First Baptist Church of Norcross, Matsuyama-Nishi Church, ASIAN YOUTH CENTER, Wakamatsu Shinai-gakuen/Shinai-Kindergarten, Kasugahara Church/Keisei Kindergarten, Kanazawa Church, Hungarian Convention, Fukuma Church, Medical Federation, Mizuho Church, Kiku Church, Kasumi-gaoka Church, Gifu Church, Yamanashi Church, Chofu Church, Fujiyoshida Church, Tomino Church, Jiyugaoka Mission Station, Takasu Church, Kurume Araki Church, Otsu Church, Hirohima Church, Makurazaki Mission Station, Naha Shintoshin Church, Kobe Church, Fukuoka Betania-mura Church, Osaka Church, Same Church, Otake Church, Fujisawa Church, Senkawa Church, Meihama Church

<January 2012>

Tamagawa Church, Jiyugaoka Church, Shion-no-oka Church, Kagoshima Church, Koga Church, Omura Kogashima Church, Nakano Church, Tsukushino-Minami Mission Station, Yurigaoka Church, Shonandai Church, Kitakyushu Association Music Committee, Nankodai Church, Seinangakuin, Kansai Reimei Church, Nahashintoshin Church, Hamamatsu Church, Nobeoka Church, Keiko Nakamura, Hiratsuka Church, Kita-Osaka Church, Myogadani Church, Fuku-yama Church, Shinozaki Church, Tokushima Church, Kawasaki Church, Seisei Kindergarten, Fujiyoshida Church One in Christ Gospel Choir, Chufgoku-Shikoku Association East Block Workshop offerings, Solidarity Prayer Week (Tamagawa Church), Tamagawa Church, Utsunomiya Church, Goro and Ayako Amano, BAPTIST STATE CONVENTION OF NC, Koga Church, Kurume Araki Church, Mizuho Church, Kurume Church, Tokyo Association Social Issues Committee, Jiyugaoka Mission Station, Takasu Church, Keisen Church, Marugame Joto-cho Church, Kobe-Nishi Church, Nagoya Church, Seinan Jo Gakuin University Junior College Handbell Choir

<February>

Mishima Church, Church, Tsukushino-Minami Church, Kagoshima Church, Nara Church, Nogata Church, Megumi Church, BAPTIST WORLD ALLIANCE, Mari Koyama, Kansai Reimei Church, Nakano Church, Toshiyuki and Toyoko Yoshimura, Kasugaya Church, Ohatano Church, Mejirogaoka Church, Shion0-san Church, Goro and Ayako Amano, Nishi-Kanto Association, APB Aid (INTERNATIONAL ASSETS HOLDING), First Baptist Church of Norcross, Tosu Church, Omiya Church, Miyahara Church, Mizuho Church, Takasu Church, Koga Church, Omura Kogashima Church, Kagoshima Church, Asahikawa-Higashi Hikari Church, Kurume Araki Church, Chugoku-Kansai Association Nishi Block

<March>

Okayama Church, Tokushima Church, INTERNATIONAL ASSETS HOLDING, Sapporo Shinsei Church, Tsukushino Futsukaichi Church, Amagasaki Church, Katae Church, Shion-no-oka Church, Isehaya Church, Tokyo Seminary Church Music Division, Kansai Reimei Church, Tomino Church, Takamatsu Tokiwa-cho Church, Kawasaki Church (Mino), Hirano Church, Singapore International Japanese Church, Edamitsu Church, Amakusa Chuo Church, Kokura Church, Miyazaki Church, Fukuoka Association Administration Committee, Matsumoto Arigasaki Church, Tottori Church, Isehaya Church, Tachikawa Church, Niigata Shunominato Church, Izumi Church and Izumi Kindergarten, Mishima Church, Nakano Church, Chofu Church, Tarami Church, Tokyo Women's Christian University, Fujiyoshida Church, Washiro Church, Hirao Church, Akatsuka Church, Yokohama-Totsuka Church, Mishima Church, Shinozaki Church, Machida Church, Goro and Ayako Amano, Houhu Church, Hitoyoshi Church, Womens' Union, Sasakuri Church, Moji-ko Church, Takasu Church, Tokorozawa Church, Okinawa Convention, Osaka Church, Tsuzuki Church, Ichikawa-Ono Church, TEXAS BAPTIST CONVENTION, Ayase-Kozono Church, Tokiwadai Church, Tarami Church, Kitakyushu Association youths' group, Tokyo-Kita Church, Kobe-Nishi Church, Kikuchi Shion Church, Shin-Tokyo Church, Kagoshima Church, Kokuraharugaoka Church, Kurume Church, Koga Church, Houhu Church, Usuki Church, Nakagawa Church, Takasu Church, Tomakomai Church, Kobe Shinsei Church, Nishihara Shinsei Church, Chiba Church, Kurume Araki Church, Koriyama Cosomos-dori Church, Hitachi Church, Ageo Church, Mejirogaoka Church, Ichikawa-Yawata Church, Mizuho Church, Itami Church, Yamanashi Church, Omiya Church, Kaminokura Church, Higashi-Kumamoto Church, Aino-kura-hikar Church, Meihama Church, Shion-no-oka Church, Shinagawa Church, Tokyo Daiichi Church, Nishi-kawaguchi Church, Tsukuba Church, Mobara Church, Yokkaichi Church, Kasumi-gaoka Church, Higashi-Fukuoka Church, Umi Church, Koba-Igawa Church, Nishi-Kyushu Association boys and girls group, Hiroshima-Nishi Church, Hatagaya Church, Chofu-Minami Church, Hasune Church, Morioka Church, Oimachi Church, Hanakoganei Church, Kobe-Igawa Church, Toyohashi Church, Otsu Church, Torigai Church, Fukuma Church, Kyoto Church, Yokosuka-Nagasawa Church, Keisen Church, Shimura Church, Kobe Church, Tomohiro Fukuhara, Fukuoka Josai Church, Miyazaki Maruyama-cho, Church, Ijuin Church, Omuta Church, Omura Kogashima Church, Isehaya Church, Nogata Church, Fukuoka Church, Oita Church, Wakamatsugakuen Shinai Kindergarten, Wakamatsu Church, Takarazuka Church, Higashiyama Church, Yokohama new life church, Tsudanuma Church, Fukuoka Seibu Church

Many Words of prayer and offerings were sent from non-Christian friends as well. We would like to convey our deepest gratitude to all of our contributors. Your continued prayers are greatly appreciated.



◆ Prayer Requests (as of May 16)



- For continued support to the affected areas.
- For the Kamaishi and Otsuchi temporary housing compounds. For their quick recovery from the flooding caused by the heavy rain during the May holidays.
- For the prevention of solitary deaths and suicides.
- For our support activities. So that they will be richly fulfilled as the work of our churches.
- So that issues surrounding the Fukushima Daiichi power plant accident will be resolved.



● Paper cranes send from churches all over Japan

◆ Message from the President

“What makes it possible”

We have been encouraged, not only by the churches of the JBC, but also by our fellow Baptist churches from around the world and by each individual who has sent us relief supplies and offerings from abroad. The sight of each volunteer who has travelled so far to share in our work has strengthened us. I would like to express our heartfelt gratitude for all of your deep prayers and warm actions.

Almost a year and a half has passed since we first began our relief activities. However, the actual rehabilitation and reconstruction work has only just begun, and a long-term effort is needed. Most of the great difficulties that those in the affected areas face have not yet been resolved: anxiety about the future stemming from living in temporary housing, struggles against radiation contamination, etc. What we can accomplish may not be great, but it is important that we continue our support. "Long term, with a measured pace." We pray that our continued efforts may lead to the encouragement of those who are yet in the midst of their suffering.

This past year, there is something that I have learned anew through the diverse dedication shown by churches from both inside and outside Japan, and through the deepening and widening of our joint-missions. I was reminded of the extent to which diverse teamwork can enrich our "work of spreading the gospel" when separate churches and individuals come together. And I realized once again, that without addressing the social issues that we face today, we will be unable to "build up the Churches," that is, the body of Christ.

We currently have 3 teams working on scene, and their latest appeals for concrete local needs can be read on our webpage. It will not do for us to overexert ourselves, but let us constantly remember to pray together, and continue to join hands in our efforts.



Toshio Okumura

JBC President
Head Director of
Great East Japan Earthquake
Disaster Relief Headquarters

May, 2012



Fiscal 2012, Fundraising Target



20 million

At our annual general assembly held last year, we decided on a fundraising target of 170 million yen for the 3 years from fiscal 2011 to 2013. 130 million, 20 million, 20 million for the years 2011, 2012 and 2013 respectively. We greatly appreciate your continued support.